

PIERI® DRC Surface Retarders Introduction

PIERI® DRC 6-serie
PIERI® DRC 1000

Oct 2021

Per Davoust - Sales Manager, Nordic
+46 42 167800
per.davoust@gcpat.com

PIERI® - Decorative Solutions



Surface retarder for hardlandscaping



PIERI® VBA

Surface retarder for precast



PIERI® DRC - PIERI® Décagel

Pigments



PIERI® Kaolor

Formliner



PIERI® Liner

Release Agent



PIERI®

Curing Agent



PIERI® Curing

PIERI® - Decorative Solutions



Varnish



PIERI® PRELOR®

Antigraffiti



PIERI® Graffistop

Equalizer for concrete



PIERI® Protec HDL

Flooring protections



PIERI® Protec

Waxed concrete



SOLACIR®

Fibers



SINTA™ VBA

Surface Retarder – DRC



PIERI® DRC 6

Solvent **C**hemical **R**etarding **D**emolding product for precast application

It provides controlled retardation to temporarily and uniformly delay the setting of a selected surface layer of concrete while remainder of the concrete hard normally



Allow to get uniform aspect of exposed aggregate

Architectural concrete faced elements, concrete walls for industrial building, anti-noise walls, sound barriers...

Pieri DRC technology

How it works

- Surface retarder sprayed on the mold and dries in 30 min before casting
- *ca 30 min to activate*, enough time to cast and vibrate
- Easy to clean the façade the day after casting
- Very easy to clean mold after demolding

Retarder for customized results

- ❖ Pieri DRC 6-serie
10 different grade for exposed aggregate
- ❖ Pieri DRC 1000
For sandblasted / acid treated surface



Aspect vs. etch

We always talk about aspect with the PIERI® DRC Range:

Concrete aspect	PIERI® DRC grade	Colour DRC	Aggregate size
Sandblasted/Acid	DRC 1000	Mint green	1 – 8 mm
Micro	DRC 6/01	Blue	1 – 4 mm
Sanded	DRC 6/02	Brown	2 – 4 mm
Worn	DRC 6/10	Green	3 – 6 mm
Light retarded	DRC 6/25	Yellow	4 – 6 mm
Medium retarded	DRC 6/50	Pink	6 – 8 mm
Medium retarded	DRC 6/80	Turquoise	8 – 10 mm
Strong retarded	DRC 6/100	Mustard	10 – 12 mm
Deep retarded	DRC 6/130	White	12 – 15 mm
Deep retarded	DRC 6/200	Orange	15 – 25 mm
Macro	DRC 6/300	Violet	> 25 mm

Pieri DRC Technology

How does it work?

DRC delays the cement hydration process strongly in the treated concrete layer from very little up to 15-20mm.

Day after casting the unhardened cement paste is cleaned with water and expose the aggregate fixed in the hardened concrete

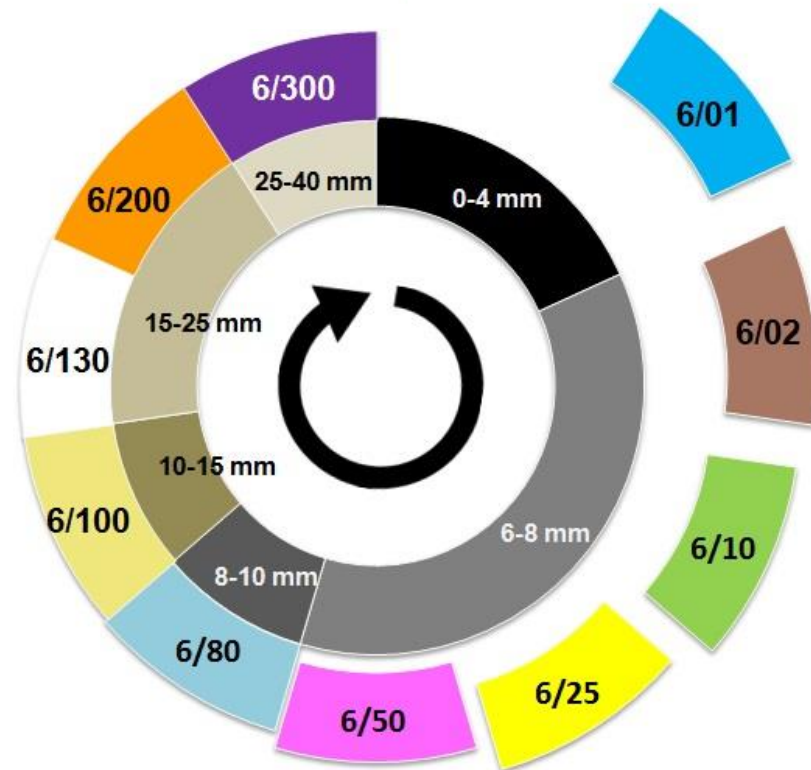
What is unique with Pieri DRC:

Activation window of ca 30 minutes is unique for DRC. Key to produce consistently with good results even with thin exposure.

DRC acts with migration and diffusion during 2 hours.



Surface retarder – Pieri® DRC 6



DRC – Activation window

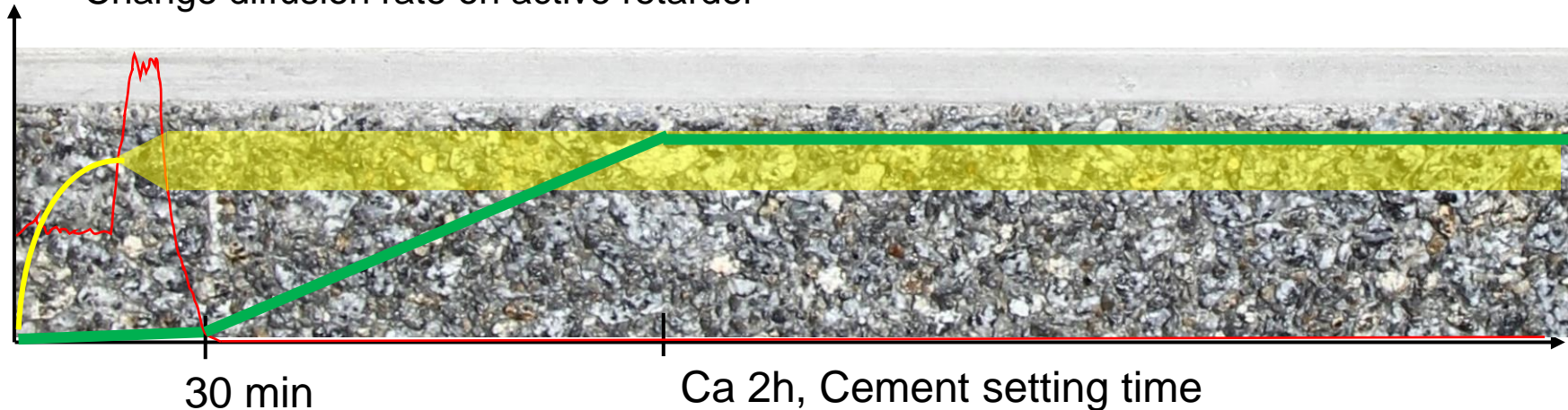
DRC dissolves

DRC starts migrate and diffusion in concrete

DRC reaction slows down when cement sets.

Vibration

- Change diffusion rate on active retarder



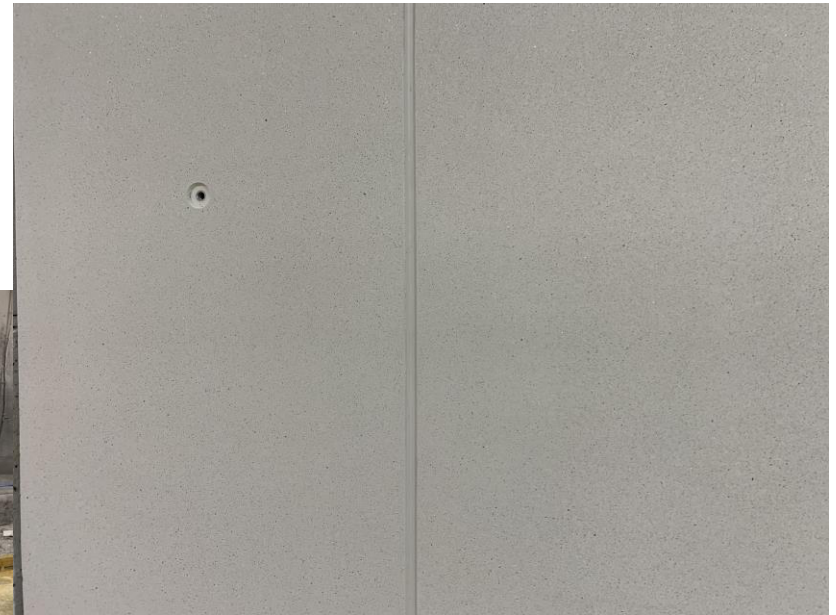
— Vibration

— DRC effect

— Effect competitive surface retarders

Pieri DRC 1000 – Sandblasted / acid treated surface

Apply – Cast – Clean – Complete



Pieri DRC 1000



Competitive



Pieri DRC 6/01



Pieri DRC 1000