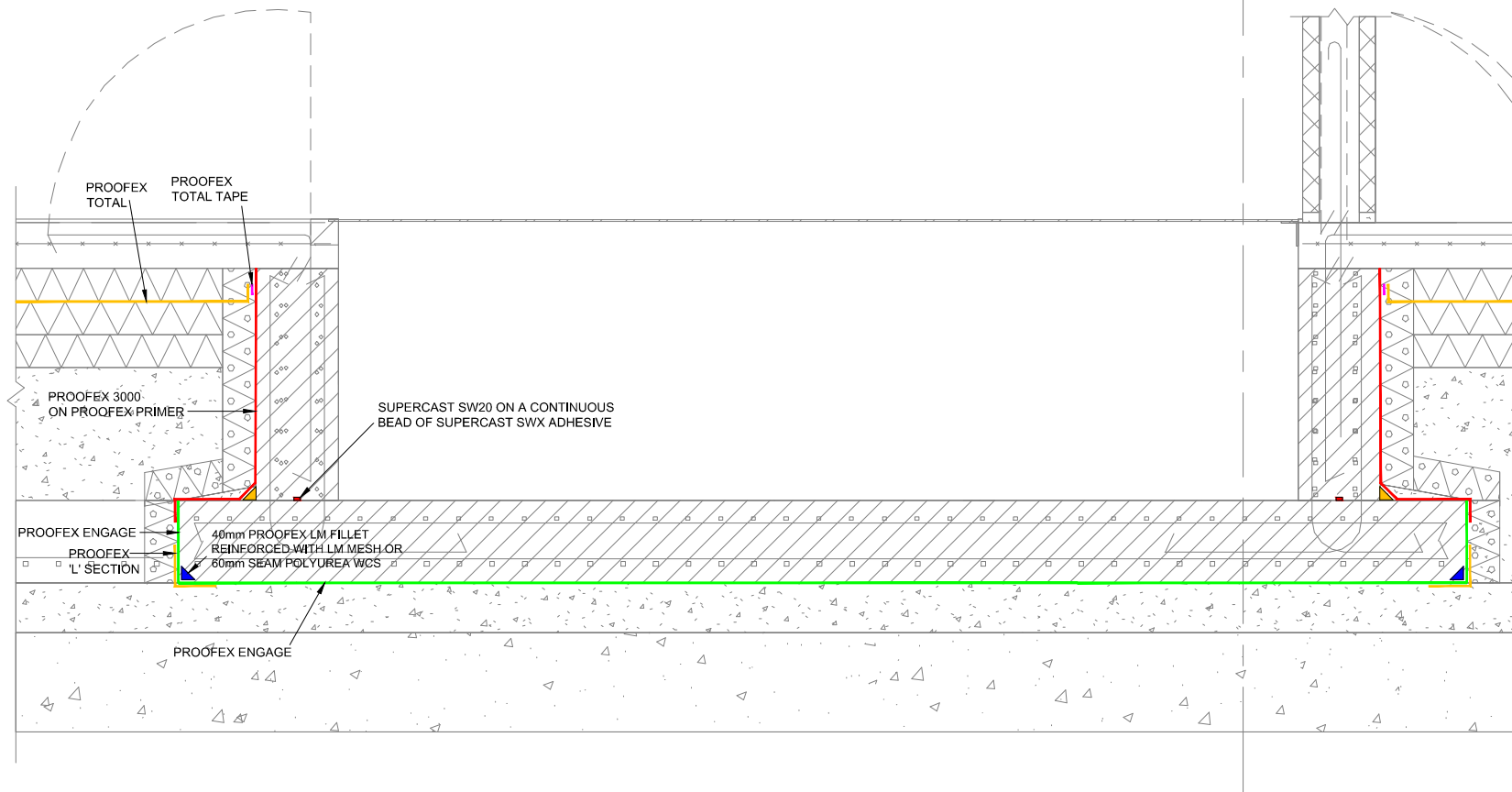


© This drawing is the copyright © of Fosroc Limited. It must not be reproduced in any part without prior written permission.

General Notes:

1. AS SUPPLIERS OF BUILDING AND CIVIL ENGINEERING PRODUCTS FOSROC LTD DO NOT OFFER A DESIGN SERVICE. INFORMATION IN THIS DRAWING IS A SUGGESTION ONLY AND MUST NOT BE USED FOR CONSTRUCTION EXCEPT AS A SIGNED OFF DRAWING BY THE SPECIFIER OR CONTRACTOR.
2. FOSROC LIMITED ARE UNABLE TO ACCEPT ANY PARTIAL OR FULL PROJECT DESIGN LIABILITY AND HAVE NO CONTROL OVER THE EXACT CONSTRUCTION CONDITION, LOCATION OR SITUATION IN WHICH OUR PRODUCTS ARE INSTALLED. FOR SPECIFIC ADVICE CONCERNING THE EXTENT OF OUR LIABILITY ON YOUR PROJECT PLEASE CONTACT FOSROC TECHNICAL DEPARTMENT.
3. ALL FOSROC MATERIALS MUST BE USED IN ACCORDANCE WITH THE RELEVANT PRINTED INSTRUCTIONS ASSOCIATED DETAILS AND DATA SHEETS.
4. DO NOT SCALE FROM DRAWING.

2




Rev	Details	Date	By
-	-	-	-

Project
KV TJADERN

Drawing Title
Waterproofing to retaining wall

Ref: K15.6-011 Detail: GD7.

	FOSROC LIMITED, Drayton Manor Business Park, Coleshill Road, Tamworth, Staffordshire, B78 3XN. Tel: 01827 262222 www.fosroc.com
---------------------------------------------------------------------------------------	---------------------------------------------------------------------------------------------------------------------------------------------------

Status			
PROPOSED			
Drawn By	MW	Checked By	GS
Date	25/03/2019	Scale	NTS
Drawing No.	D-04-02	Rev	-